

Load Cells

SIWAREX WL200

Overview



The load cell is suitable for small to medium platform scales with one load cell (max. platform size 400 x 400 mm) as well as for use in medium accuracy weighing machines of Class III with a max. load cell verification interval number $n_{max} = 3000d$.

It is made of stainless steel and therefore also suitable for use in harsh environments.

Design

The measuring element is hermetically sealed and has a calibrated output current.

Technical specifications

SIWAREX WL200	
Possible applications	Platform scales, conveyor scales
Model	Platform load cell
Rated load E_{max}	5, 10, 20, 50, 100, 200 kg
Accuracy class according to OIML R60	C31)
Max. load cell verification interval n_c	3 000
Min. load cell verification interval V_{min}	$E_{max}/7 500$
Combined error F_{comb}	$\pm 0.02 \% C_n$
Repeatability F_v	$\pm 0.017 \% C_n$
Creep error F_{cr}	
· 30 min	$\pm 0.02 \% C_n$
Temperature effect	
· Zero signal T_{K0}	$0.017 \% C_n/5 K$
· Characteristic value T_{Kc}	$0.014 \% C_n/5 K$
Min. dead load E_{min}	0 kg
Safe load limit L_u	$150 \% E_{max}$
Ultimate load L_d	$300 \% E_{max}$
Safe side load L_{lq}	$100 \% E_{max}$
Rated measuring path h_m at E_{max}	$0.27 \pm 0.05 \text{ mm}$
Recommended supply voltage	5 ... 12 V DC
Rated characteristic value C_n	$2.0 \pm 0.2 \text{ mV/V}$
Tolerance D_0 of zero signal	$< \pm 1.0 \% C_n$
Input resistance R_e	383 ± 4
Output resistance R_a	351 ± 2
Insulation resistance R_{is}	5 000 M at 50 V DC
Rated temperature range B_n	-10 ... +40 °C
Operating temperature range B_{tu}	-35 ... +65 °C
Storage temperature range B_{ts}	-40 ... +70 °C
Sensor material (DIN)	Stainless steel
Degree of protection to EN 60529	IP67

Max. tightening torque of the fixing screws

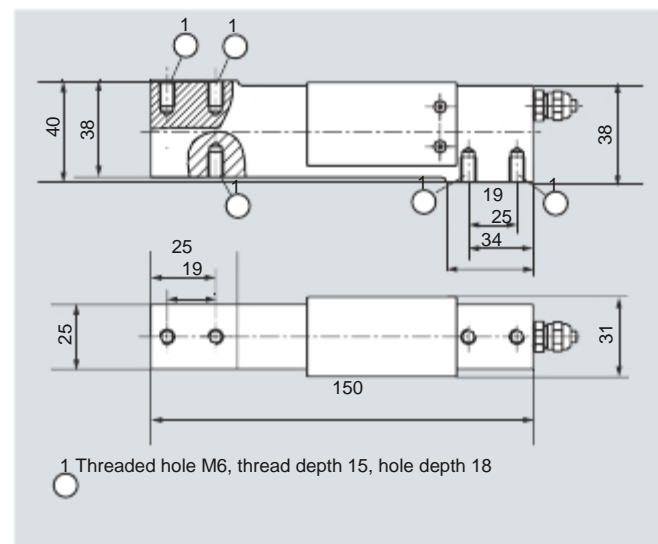
· $E_{max} = 3, 5, 10, 20, 50, 100 \text{ kg}$	14 Nm
· $E_{max} = 200 \text{ kg}$	16 Nm

Cable connection

Function	Color
· EXC + (supply +)	· Green
· EXC - (supply -)	· Black
· SIG + (measured signal +)	· White
· SIG - (measured signal -)	· Red
· Sense + (sensor line +)	· Yellow
· Sense - (sensor line -)	· Blue
· Shield	· Transparent

¹⁾ OIML type approval for SIWAREX WL200 available soon

Dimensional drawings



Load cell SIWAREX WL200, dimensions in mm